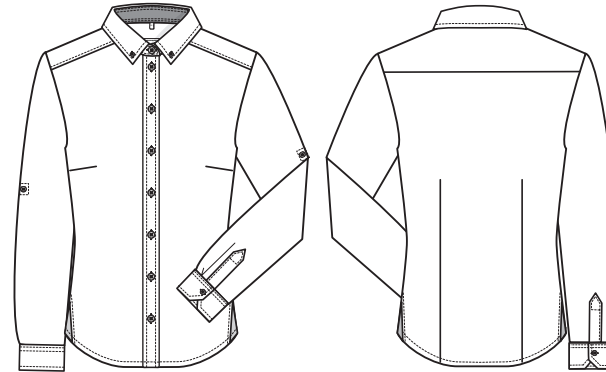


SERVICE HEMDEN/BLUSEN



STYLE
6558



NEU

GERMAN

DAMEN-BLUSE

- Regular Fit
- Krempelarm
- Button-Down-Kragen
- Seitlicher Kontrasteinsatz
- **GRÖSSEN:** 32-52

NR: 65582.6960.020 BLUE DENIM
NR: 65581.6960.029 LIGHT BLUE DENIM
NR: 6558.6950.020 DENIM KARIERT

GEWEBE: 100% Baumwolle, 136 g/m²

PFLEGE:



100% Cotton

Denim

ENGLISH

LADIES BLOUSE

- regular fit
- turn-up sleeves
- button-down collar
- side contrast insert
- **SIZES:** 32-52

NO: 65582.6960.020 BLUE DENIM
NO: 65581.6960.029 LIGHT BLUE DENIM
NO: 6558.6950.020 DENIM CHECKED

FABRIC: 100% cotton, 136 g/m²

CARE:



100% Cotton

Denim

FRENCH

CHEMISIER FEMME

- Regular fit
- Manches à retrousser
- Col à pointes boutonnées
- Empiècement latérale contrastante
- **TAILLES :** 32-52

RÉF : 65582.6960.020 BLEU DENIM
RÉF : 65581.6960.029 BLEU CLAIR DENIM
RÉF : 6558.6950.020 DENIM À CARREAUX

TEXTILE : 100 % coton, 136 g/m²

ENTRETIEN :



100% Cotton

Denim

DUTCH

DAMES BLOUSE

- regular fit
- opstropbare mouw
- button-down kraag
- contrastafwerking aan de kant
- **MAAT:** 32-52

NR: 65582.6960.020 DENIM BLAUW
NR: 65581.6960.029 DENIM LICHTBLAUW
NR: 6558.6950.020 DENIM GERUIT

DOEK: 100% katoen, 136 g/m²

ONDERHOUD:



100% Cotton

Denim